



With Rich, Vivid Color



- 1 Photorealistic skin tones
- 2 Beautiful outdoor banners
- 3 Flawless fine art giclees
- 4 Vivid color backlit
- 5 Custom wall coverings
- 6 Bold, colorful POP displays
- 7 High-impact event posters
- 8 Durable outdoor signs

Specifications	ADVANCED JET		SOLJET PRO III		
	AJ-1000	AJ-740	XJ-740	XJ-640	
Printing technology	Piezoelectric inkjet				
	Width	1220 to 2641 mm (48 to 104 in.)	1220 to 1910 mm (48 to 75.2 in.)	210 to 1679 mm (8.3 to 74 in.)	
	Thickness	Maximum 1.0 mm (39 mil) with liner			
	Roll outer diameter	Maximum 250 mm (9.8 in.)		Maximum 210 mm (8.3 in.)	
	Roll weight	Maximum 100 kg (220 lb.)		Maximum 47 kg (103 lb.)	
Printing width *1	Maximum 2600 mm (102.3 in.)		76.2 mm (3 in.)	Maximum 1870 mm (73.6 in.)	
	Maximum 1870 mm (73.6 in.)		76.2 mm (3 in.) or 50.8 mm (2 in.)	Maximum 1615 mm (63.6 in.)	
Ink cartridges	Types				
	Roland EcoXtreme cartridge		Roland ECO-SOL MAX cartridge		
	Capacity	1 liter		220 cc or 440 cc	
Colors	6 colors (cyan, magenta, yellow, black, light cyan, and light magenta)		6 colors (cyan, magenta, yellow, black, light cyan, and light magenta) or 4 colors (cyan, magenta, yellow, and black)		
	Maximum 720 dpi		Maximum 1440 dpi		
Distance accuracy *2	Error of less than ±0.3% of distance travelled, or ±0.3 mm, whichever is greater				
Media heating system *3	Preheater and print heater, setting range for the preset temperature: 35 to 50°C (95 to 122°F)		Print heater, setting range for the preset temperature: 30 to 45°C (86 to 112°F)		
	Heating method: (Used in combination with the blower fan), setting range for the preset temperature: 35 to 60°C (95 to 140°F)		Heating method: (Used in combination with the blower fan), setting range for the preset temperature: 30 to 50°C (86 to 122°F)		
Media take-up system	Roll outer diameter		Maximum 250 mm (9.8 in.)		
	Roll weight		Maximum 100 kg (220 lb.)		
Connectivity	Ethernet (10BASE-T/100BASE-TX, automatic switching)		Ethernet (10BASE-T/100BASE-TX, automatic switching)		
	Automatic sleep				
Power requirements	Printer: AC 200 to 240 V ±10%, 10 A, 50/60 Hz Dryer: AC 200 to 240 V ±10%, 10 A, 50/60 Hz		Printer: AC 200 to 240 V ±10%, 8.5 A, 50/60 Hz Dryer: AC 220 to 240 V ±10%, 7 A, 50/60 Hz		
	Approx. 1600 W Dryer: Approx. 2300 W		Approx. 1600 W		
Power consumption	Sleep mode		Approx. 60 W		
	During operation		Approx. 47 W		
Acoustic noise level	During operation		70 dB (A) or less (according to ISO 7779)		
	During standby		40 dB (A) or less (according to ISO 7779)		
Dimensions (with stand)	4299 (W) x 1115 (D) x 1413 (H) mm (169.3 (W) x 43.9 (D) x 55.7 (H) in.)		3632 (W) x 1115 (D) x 1359 (H) mm (143 (W) x 43.9 (D) x 53.7 (H) in.)		
	388 kg (1319 lb.)		225 kg (495 lb.)		
Environmental	Power on		Temperature: 20 to 32°C (68 to 89.6°F), humidity: 35 to 80% (no condensation)		
	Power off		Temperature: 5 to 40°C (41 to 104°F), humidity: 20 to 80% (no condensation)		
Accessories	Power cords, roll shafts, end caps, spacers, media reinforcement pipe, paper tube, drain bottle, media gauge, media clamps, hexagonal wrenches, Head-unit tool, cleaning kit, syringe, tube, maintenance liquid cartridge, software RIP, Roland-PrintServer CD-ROM, User's Manual, Setup Guide, Roland-PrintServer Network Settings Guide		Stand, power cord, media clamps, media flanges, replacement blade for separating knife, cleaning kit, software RIP, and User's Manual, etc.		

\*1 The length of printing is subject to the limitations of the program.  
\*2 At Roland PET film, print travel: 1 m, temperature: 25°C (77°F), humidity: 50%, not assured when the print heater or dryer is used.  
\*3 Warm-up is required after power-on. This may require 5 to 20 minutes, depending on the operating environment. Depending on the ambient temperature and media width, it may not reach a preset temperature.

Roland VersaWorks System Requirements	
Operating system	Windows Vista™ Ultimate or Business (32-bit edition), or Windows® XP Professional Service Pack 2, or Windows® 2000 Service Pack 4
CPU	Pentium 4, 2.0 GHz or faster recommended
RAM	1 GB or more recommended
Free hard-disk space	40 GB for more recommended

Options for SOLJET PRO III XJ-740/XJ-640		
ECO-SOL MEDIA	SPVCB-1270	PVC banner, 1270 mm x 20 m (50' x 65')
	SVB-8-1270	PVC banner, blackout, 1270 mm x 20 m (50' x 65')
	SP-M-1270	Matte PET film, 1270 mm x 30 m (50' x 98')
	SFPL-F-1300	Backlit film, 1300 mm x 30 m (51'-8" x 98')
ECO-SOL MAX Ink	ESL3-4MG	Magenta, 440 cc
	ESL3-4YE	Yellow, 440 cc
	ESL3-4CY	Cyan, 440 cc
	ESL3-4BK	Black, 440 cc
Cleaning liquid	ESL3-ALC	Light cyan, 440 cc
	ESL3-4LM	Light magenta, 440 cc
	ESL3-LC	Light cyan, 220 cc
	ESL3-LM	Light magenta, 220 cc
Heater and blower	DU-740	For XJ-740
	DU-640	For XJ-640

Roland DG products that feature this environmental label meet the company's criteria for environmental consciousness, a set of standards based on ISO 14021 self-declaration type II. For more information, please visit [www.rolanddg.com](http://www.rolanddg.com).

ISO 14001:2004 and ISO 9001:2000 Certified

Roland pursues both environmental protection and continuous quality improvement. Under the philosophy of preserving the environment and human health, Roland is actively working to abolish organic solvents in production, to reduce and recycle waste, to reduce power use, and to purchase recycled products. Roland constantly strives to provide the most highly reliable products available.

Roland reserves the right to make changes in specifications, materials or accessories without notice. Your actual output may vary. For optimum output quality, periodic maintenance to critical components may be required. Please contact your Roland dealer for details. No guarantee or warranty is implied other than expressly stated. Roland shall not be liable for any incidental or consequential damages, whether foreseeable or not, caused by defects in such products. All trademarks are the property of their respective owners.

**Roland** AUTHORIZED DEALER: **YARHAMVILLE PTY LTD** 1300 136 359

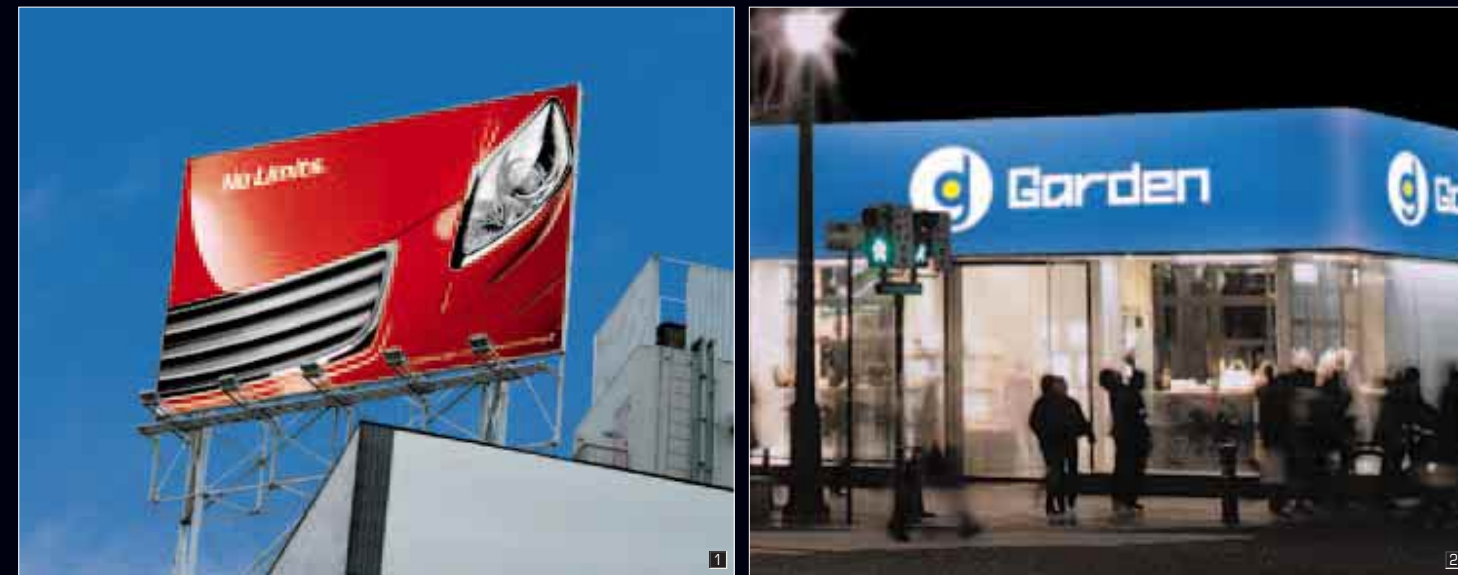
Printed in Japan. RDG-416009399 '07 AUG. A-4 G-S



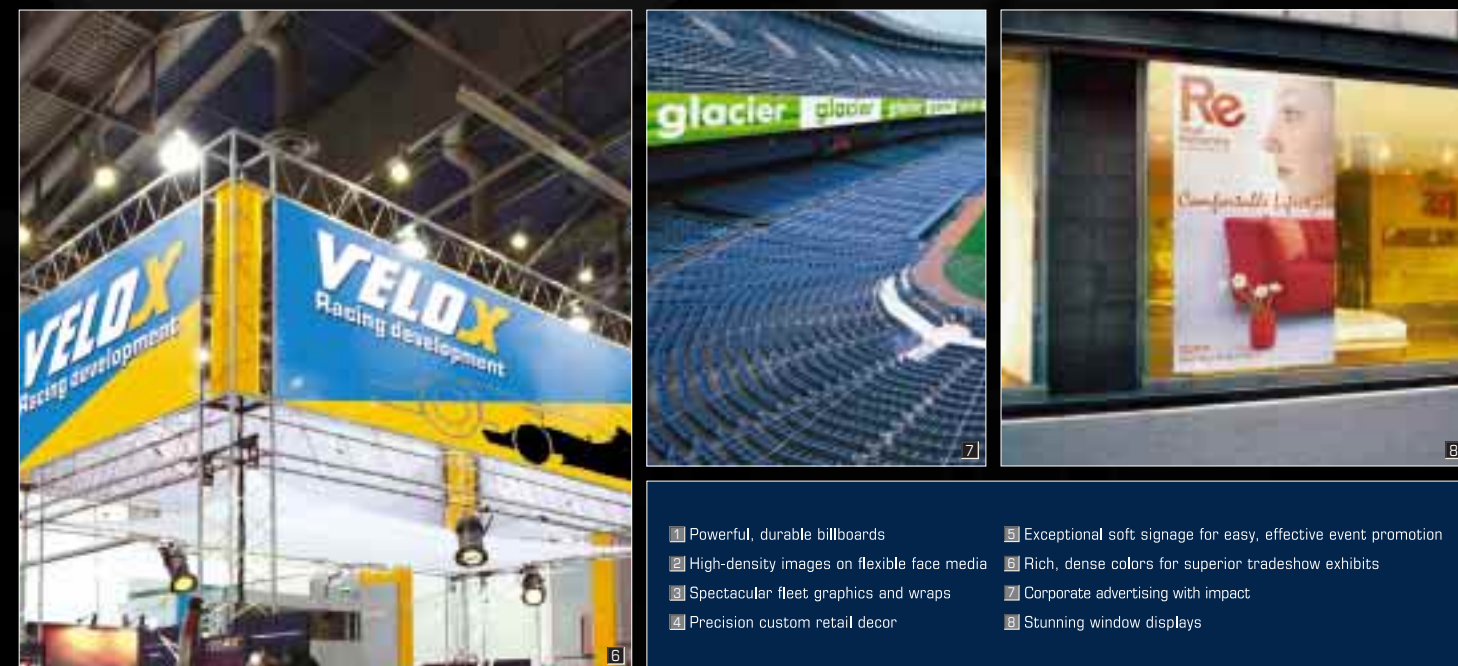
Roland

**ADVANCED JET**  
AJ-1000/AJ-740

**SOLJET PRO III**  
XJ-740/XJ-640



Powerful Performance



- 1 Powerful, durable billboards
- 2 High-density images on flexible face media
- 3 Spectacular fleet graphics and wraps
- 4 Precision custom retail decor
- 5 Exceptional soft signage for easy, effective event promotion
- 6 Rich, dense colors for superior tradeshow exhibits
- 7 Corporate advertising with impact
- 8 Stunning window displays



## Exceptional Speed and Image Quality

The SOLJET PRO III XJ series is offered in 64" and 74" models, combining high-speed performance and superior image quality for the ultimate in six- or four-color digital printing.



**SOLJET PRO III**  
**XJ-740/XJ-640**

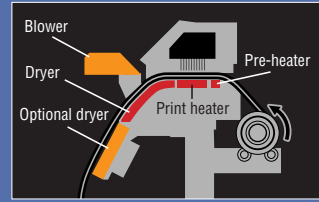
**SOLJET PRO III**

### Optimum Productivity and Low Running Costs

Available in 64" and 74" models, the six-color (CMYKLCm) or four-color (CCMMYK) XJ series builds on Roland's renowned SOLJET technology to achieve exceptional image quality at higher print speeds. With a maximum print speed of 42.6m<sup>2</sup>/hr (458.61sqft/hr), the XJ is designed for production printing of indoor and outdoor graphics including banners, signs, point of purchase displays, vehicle graphics, backlit displays, event graphics and more. The XJ series supports a wide variety of media including vinyl, banner, photo paper, poster paper and canvas. For even greater productivity, the XJ features an automated maintenance system that saves valuable ink and time, resulting in lower overall running costs. The XJ's in-line print head configuration eliminates the need for lengthy calibration procedures as well.

### Outstanding Visual Impact

The XJ series prints at up to 1440 x 1440 dpi resolution in dense, rich colors for indoor and outdoor graphics that look great up close and at a distance. The XJ has been optimized to achieve unparalleled image quality in every print mode and produces flawless skin tones, high-contrast images, and solid colors with no traces of banding even at the highest print speeds. A built-in tri-heater system increases media recaptiveness for maximum ink brightness and fastness.



### Exceptional Print Quality with ECO-SOL MAX Ink

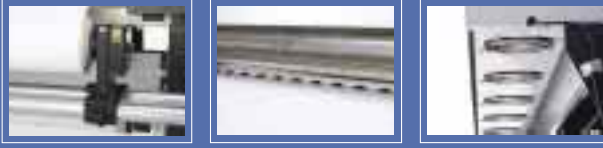
ECO-SOL MAX eco-solvent ink delivers high color density and a wide gamut for exceptional images print after print. ECO-SOL MAX performs on a wide range of both coated and uncoated media, including backlit film, for increased versatility. Fast-drying and scratch-resistant, ECO-SOL MAX produces prints that dry quickly for easy handling throughout the production and finishing processes. Packaged in no-mess 220 and 440 cc cartridges, ECO-SOL MAX is virtually odorless for maximum convenience and comfort.



**ECO-SOL MAX**

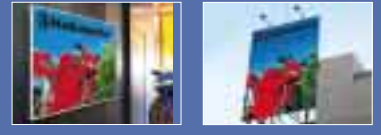
### Added Features for Maximum Performance

The XJ series offers numerous advanced features for high-volume printing. Rigid construction and a heavy-duty take-up system support large media rolls weighing up to 47kg (103.6lbs). Easy access media shafts make it convenient to load even the heaviest media. Additional system enhancements include new pinch rollers, grit rollers and additional grit power for flawless media feeding and tracking. Extended built-in media edge clamps prevent media curling and ragged edges. New media flanges are included as well for precision media tracking through long unattended production runs. A high-speed network board supports rapid data transfers, and an optional dryer/blower unit further expedites the production process.



### Powerful VersaWorks RIP Software

Included in both the AJ and XJ series, Roland VersaWorks RIP was written from the ground up to be easy to use while offering advanced features including the new Max Impact color management preset, the Roland Color System for precision spot color matching, and Variable Data Printing for easy, custom prints with variable data.



Default preset features fine gradations for close-up viewing. Max Impact provides vivid colors for outdoor signs.

The Max Impact preset produces deeper, more vivid blues and reds, the fundamental colors for outdoor graphics, while preserving the overall color balance required for beautiful, photorealistic images. Or you can choose the default preset to faithfully reproduce human skin tones, pastel as well as natural colors, and metallic surfaces with superb gradations. Built on an Adobe Postscript engine, VersaWorks includes a wide variety of layout, edit and print functions, and allows users to import files from popular design programs and preview jobs on screen. VersaWorks also includes more than 150 ICC profiles for reliable results the first time and every time. The Roland@NET automated update feature ensures ongoing access to the latest VersaWorks version and profiles available.



**74" XJ-740**  
● 74" 6-color CMYKLCm or 4-color CCMMYK wide-format inkjet printer

**64" XJ-640**  
● 64" 6-color CMYKLCm or 4-color CCMMYK wide-format inkjet printer

**ADVANCED JET**

### High-Speed Performance

The Roland AdvancedJET AJ series is the fastest printer line in its class and the perfect production tool for high-volume printing and rush jobs. The AJ produces billboards, banners, fleet and vehicle graphics, and point of purchase displays at a maximum print speed of up to 90m<sup>2</sup>/hr (968 sqft/hr). With 72mm-wide heads, 510 nozzles per line and 35pl per dot, the AJ offers superior image quality at 45m<sup>2</sup>/hr (484 sqft/hr). Additional performance features, including a heavy-duty tension-controlled take-up system for rolls weighing up to 100kg (220 lbs), make the AJ ideal for long production runs and unattended printing. The AJ also comes equipped with high-capacity 1-liter ink cartridges and an advanced ink delivery system that allows replacement of cartridges without pausing. A powerful drying system quickly dries ink and media for high-speed applications.



### Superior Image Quality

With a maximum print resolution of 720 x 720 dpi, the AJ series produces brilliant six-color CMYKLCm graphics with superior ink bonding, scratch resistance and alcohol resistance. For optimum performance across a wide range of media, the AJ features three print head heights that can be easily adjusted. The AJ's high-density inks image well even on flexible face media, and two new light ink control profiles ensure top quality on both glossy and matte vinyl.

### Brilliant, Durable EcoXtreme Ink

Roland EcoXtreme ink was developed exclusively for the AdvancedJET AJ series to provide outstanding color density, wider gamut and rugged durability. EcoXtreme ink is available in six colors (CMYKLCm) and produces vibrant images even in high-speed production modes on coated and uncoated media. EcoXtreme ink offers exceptional bonding

with uncoated banner substrates and tarpaulin, as well as enhanced scratch and alcohol resistance for outstanding outdoor durability of up to three years.

**EcoXtreme**

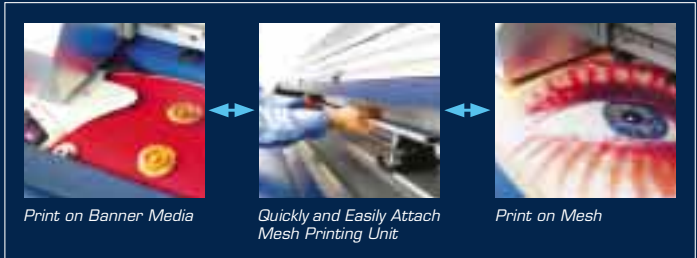


### Minimum Maintenance and Ownership Costs

The price and installation costs of many wide and grand-format printers can run several hundred thousand dollars. By comparison, an AJ printer can be purchased and installed for a fraction of this cost. Operational costs for the AJ are lower as well due to an innovative automated intelligent maintenance system that saves ink and reduces down time. This advanced system performs routine maintenance tasks automatically, eliminating the need for time-consuming daily manual cleanings. The AJ's intelligent maintenance system even adjusts the maintenance schedule automatically depending on the room temperature. As a result, manual cleaning around the print head and capping station is required only every two weeks.

### Convenient Optional Mesh Printing Unit

The AJ's versatility can be further enhanced with the optional MU Mesh Printing Unit for economical unlined mesh media. Custom engineered for the AJ, the MU is easy to attach and detach and features a built-in drainage system for easy removal of excess ink. Popular for a variety of indoor and outdoor applications, mesh is particularly well suited for graphics that may be exposed to excessive wind or any graphic calling for a unique sheer look. Unlined mesh offers many advantages over lined mesh including a lower cost per square meter. In addition, unlined mesh is easier to print, handle and transport, and it does not generate liner waste.



**104" AJ-1000**  
● 104" 6-color CMYKLCm industrial high-speed inkjet printer

**74" AJ-740**  
● 74" 6-color CMYKLCm industrial high-speed inkjet printer

## Maximum Productivity

With print speeds of up to 90m<sup>2</sup>/hr (968 sqft/hr), the AdvancedJET AJ line has redefined the standards for high-volume production printing. Available in 74" and 104" models, the six-color AdvancedJET AJ delivers maximum productivity with world-class Roland engineering.



**ADVANCED JET**  
**AJ-1000/AJ-740**