

 Roland®

STIKA

DESIGN CUTTER

SV-15/12/8



**Create Colorful
Custom Graphics with Ease**



Model
SV-15
340mm (15") Cutter



Model
SV-12
250mm (12") Cutter



Model
SV-8
160mm (8") Cutter

STIKA SV-15/12/8 Features:

- Compact, easy-to-use vinyl cutter for schools, shops, businesses or homes
- Ideal for a wide variety of applications including signs, labels, decals, stickers, vehicle graphics, retail displays, heat transfers for apparel and etching material
- A complete solution packaged with everything you need to get started
- Includes Roland CutStudio design software
- Can connect to a standard desktop printer for contour cutting of printed images without additional equipment
- Tiling feature allows STIKA to produce larger signs of up to 64 tiles (8 tiles horizontally and 8 tiles vertically)
- Media guidelines help ensure correct media positioning for quality production
- USB interface for easy connection to PCs



A Complete Solution Including Easy-to-Use Software

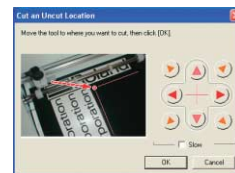
Roland CutStudio Software

Every STIKA comes with the latest version of Roland CutStudio, easy-to-use design software packed with features. From simple lettering to colorful sign graphics, CutStudio makes it easy to be creative. Using CutStudio, you can draw and edit circles and curves, add text along an arc, and import photos and graphics in jpg or bmp. Combine rectangles, circles, polygons, lines and curves for more sophisticated graphics. CutStudio is compatible with Windows 98 SE/Me/2000/XP and includes plug-in software for Adobe® Illustrator® 9/10/CS/CS2 and CorelDRAW® 10/11/12 for Windows, and Adobe® Illustrator® 9/10/CS/CS2 for Mac. As a result, users of these programs can send data directly to STIKA.



Roland STIKA Navi On-Screen Operation Panel

STIKA comes equipped with the STIKA Navi on-screen operation panel, a unique feature that makes vinyl cutting even easier and helps maximize media usage. Using the STIKA Navi panel and your mouse, you can move the cutting blade into the optimum start position for precision results every time. The STIKA Navi menu can be accessed from either the "Cutting Setup" or "Set up the printer" menu.



Specifications	SV-15	SV-12	SV-8
Cutting method		Friction feed	
Maximum cutting range	Width: 340 mm (13-3/8 in.) Length: 1000 mm (39-5/16 in.)	Width: 250 mm (9-13/16 in.) Length: 1000 mm (39-5/16 in.)	Width: 160 mm (6-1/4 in.) Length: 1000 mm (39-5/16 in.)
Useable material size **	Width: 360 to 381 mm (14-1/8 to 15 in.) Length: 1100 mm (43-1/4 in.) or less Width: 280 to 305 mm (11 to 12 in.) (A3 length, A4 width) Length: 1100 mm (43-1/4 in.) or less	Width: 280 to 305 mm (11 to 12 in.) (A3 length, A4 width) Length: 1100 mm (43-1/4 in.) or less	Width: 200 to 215 mm (7-13/16 to 8-7/16 in.) (A4 length) Length: 1100 mm (43-1/4 in.) or less
Maximum cutting speed	12 to 100 mm/sec. (7/16 to 3-7/8 in./sec.)	12 to 40 mm/sec. (7/16 to 1-9/16 in./sec.)	12 to 40 mm/sec. (7/16 to 1-9/16 in./sec.)
Useable material type **	Vinyl chloride material (material section thickness alone is 0.1 mm or less, thickness including backing paper is 0.3 mm (0.012 in.) or less) Label paper (Thickness including backing paper is 0.3 mm (0.012 in.) or less)		
Interface	USB 1.1		
Power supply / Power consumption	Dedicated AC adapter Input: AC 100 V ± 10%, 50/60 Hz 1.7A Output: DC 19 V, 2.1 A / Approx. 20 W (including AC adapter)		
Dimensions	522 (W) x ~ 205 (D) x ~ 115 mm (H) (20-5/8 (W) x ~ 8-1/8 (D) x ~ 4-1/2 in. (H))	440 (W) x ~ 205 (D) x ~ 115 mm (H) (17-3/8 (W) x ~ 8-1/8 (D) x ~ 4-1/2 in. (H))	340 (W) x ~ 205 (D) x ~ 115 mm (H) (13-3/8 (W) x ~ 8-1/8 (D) x ~ 4-1/2 in. (H))
Weight	3.3 Kg (7.3 lb)	2.7 Kg (6 lb)	2.2 Kg (4.9 lb)
Acoustic noise level	60 dB (A) or less (according to ISO7779)		
Operating environment	Temperature: 5 to 40°C (41 to 104°F), humidity: 35 to 80% (no condensation)		
Included items	AC adapter, power cord, USB cable, replaceable blade protector, blade, blade holder, pin, test-use material, test-use application tape, CD-ROM, user's manual		

*1 Depending upon the type, material that is 500 mm (19-5/8 in.) or longer may shift during cutting. *2 You may also be unable to cut some types of material.

Included Software	Roland CutStudio	Roland CutStudio Plug-in for Adobe® Illustrator®	Roland CutStudio Plug-in for CorelDRAW®
OS	Windows® 98SE/Me/2000/XP	Windows®, Mac OS	Windows®
Application Software		Adobe® Illustrator® 9/10/CS/CS2	CorelDRAW® 10/11/12

Options		
Blades	ZEC-U5022	For cutting thick, reflective and fluorescent vinyl as well as sign vinyl in general, 2-pack
Blade holders	XD-CH3	For sign vinyl in general. Blade holder with blade extension adjuster, made of resin

ISO 14001 and ISO 9001:2000 Certified

Roland pursues both environmental protection and continuous quality improvement. Under the philosophy of preserving the environment and human health, Roland DG is actively working to abolish organic solvents in production, to reduce and recycle waste, to reduce power use, and to purchase recycled products. Roland DG constantly strives to provide the most highly reliable products available.



Roland reserves the right to make changes in specifications, materials or accessories without notice. Your actual output may vary. For optimum output quality, periodic maintenance to critical components may be required. Please contact your Roland dealer for details. No guarantee or warranty is implied other than expressly stated. Roland shall not be liable for any incidental or consequential damages, whether foreseeable or not, caused by defects in such products. All trademarks are the property of their respective owners.