

Specifications

Printable material	Gold, silver, copper, platinum, brass, aluminium, iron, stainless steel, etc. (Vickers hardness [HV] of the printing surface must be 200 or less.)
Loadable material size	Maximum 90 mm (width) x 90 mm (height) x 20 mm (thickness) (3-1/2 in. x 3-1/2 in. x 3/4 in.)
Printing area	80 mm x 80 mm (3-1/8 in. x 3-1/8 in.)
Resolution	529 dpi (High resolution), 353 dpi (Photo), 265 dpi (Text)
Printing direction	Unidirectional printing or bidirectional printing (Selectable with Windows driver)
Printing speed (Default)	50 mm/sec (1-15/16 in./sec) Photo, 33 mm/sec (1-5/16 in./sec) High resolution / Text
Interface	USB interface (compliant with Universal Serial Bus Specification Revision 1.1)
Power supply	Dedicated AC adapter Input : AC 100 to 240 V ±10 % 50/60 Hz 1.7 A Output : DC 19 V 2.1 A
Power consumption	Approx. 15 W
Acoustic noise level	Under 70 dB (A) (According to ISO 7779)
Operation temperature	10 to 30 °C (50 to 86 °F)
Operation humidity	35 to 80 % (no condensation)
External dimensions	226 mm (W) x 321 mm (D) x 200 mm (H) (8-15/16 in. (W) x 12-11/16 in. (D) x 7-7/8 in. (H))
Weight	4.0 kg (8.8 lb.)
Included items	AC adapter, power cord, test-use printing material, USB cable, CD-ROM, and user's manual

METAZA

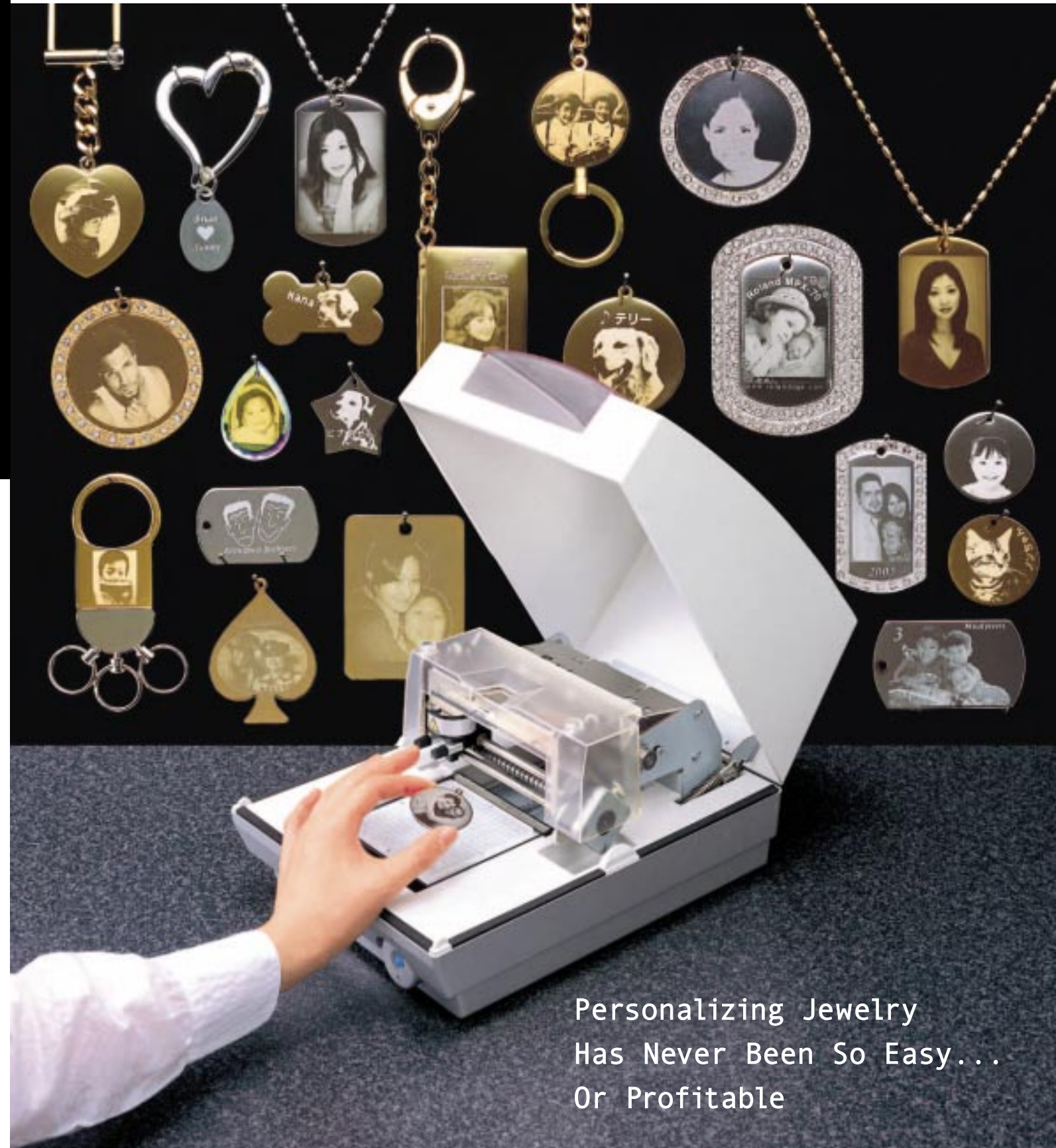
• METAL PRINTER •

Roland®

METAZA

• METAL PRINTER •

Model MPX-70



ISO 14001 and ISO 9001:2000 Certified

Roland pursues both environmental protection and continuous quality improvement. Under the philosophy of preserving the environment and human health, Roland DG is actively working to abolish organic solvents in production, to reduce and recycle waste, to reduce power use, and to purchase recycled products. Roland DG constantly strives to provide the most highly reliable products available.



Roland reserves the right to make changes in specifications, materials or accessories without notice. Your actual output may vary. For optimum output quality, periodic maintenance to critical components may be required. Please contact your Roland dealer for details. No guarantee or warranty is implied other than expressly stated. Roland shall not be liable for any incidental or consequential damages, whether foreseeable or not, caused by defects in such products. All trademarks are the property of their respective owners.

Roland®

AUTHORIZED DEALER:

Printed in Japan. RDG-416003099 '05 SEP. A-4 G-S

YARHAMVILLE PTY LTD
1300 136 359

Personalizing Jewelry
Has Never Been So Easy...
Or Profitable

The Ultimate Personalization Tool — Perfect for Jewelry Stores, Kiosks and Photo Labs

Roland introduces a profitable new opportunity for jewelry and gift stores, retail kiosks and photo labs. With the METAZA MPX-70 Photo Impact Printer, you can quickly transform pendants, key rings, lighters, ornaments and special occasion nameplates into treasured heirlooms by adding photos, names or text.

METAZA works just like a printer and requires no special training. With a minimal investment, you can start a METAZA business today and quickly generate a substantial profit.



Jewelry Store

Kiosk

Photo Lab

Scan Images or Use Digital Photos for Custom Results

Scan a customer's image or use photos from a standard digital camera. METAZA works with multiple file formats for professional, custom results. METAZA allows you to create finished products instantly. So you can process orders on-site for immediate delivery – or for fulfillment at a later date.

Imprints a Wide Variety of Materials

Roland's innovative RPMS technology allows you to imprint halftones, line art, and text onto flat surfaces using a variety of materials including brass, gold, silver, platinum, aluminum, stainless steel and acrylic. METAZA's new high-speed nine-pin stylus strikes the marking surface with variable force to accurately reproduce both the delicate gradations and high contrast areas of the original image. Replacement of the stylus is performed automatically, resulting in crisp, graphics with clean, sharp edges every time.

Easy-to-Use Design Software Included

METAZA works with desktop and notebook PCs running Windows® 98SE (Second Edition)/Me/2000/XP and includes easy-to-use design software. Within minutes of setup, Dr. METAZA2 allows even first-time users to begin editing images and adding text, frames and borders. You can quickly and easily remove backgrounds, rotate artwork, resize or wrap text and adjust image contrast. Dr. METAZA2 imports data files in JPEG or BMP format and also accepts data from digital cameras and TWAIN_32-compatible scanners.

Three Simple Steps to Photo Marking with METAZA



1 Import Your Digital Media.

Import an image into your PC from a digital camera, CD-ROM/DVD, or from photos supplied by your customer.

2 Design Your Image.

Using Dr. METAZA2, layout and edit photos, text, logos, etc.

3 Imprint.

Position the material in the MPX-70 and complete imprinting.



METAZA

• METAL PRINTER •
Model MPX-70

